



# INVOLVING CHILDREN, YOUNG PEOPLE AND FAMILIES IN CO-PRODUCTION

This model has been developed as an invitation for those working with children, young people and their families (CYPF) to consider ways in which the voices of CYPF are heard and amplified when developing projects and services designed to serve them. We encourage you when considering this model to read the accompanying explanatory text. Contact us for a copy: [getinvolved@fullscopecollaboration.org.uk](mailto:getinvolved@fullscopecollaboration.org.uk)

## Task and finish

### Steering group

A diverse and inclusive group with professional and/or lived experience is established at the start and oversees the whole process.

### Duration

Used for time-limited projects where the experiences and skills of children, young people and their families (CYPF) are needed to help develop solutions or ideas about a particular issue. Ensure time is allowed to build group trust and dynamics.

© Fullscope 2022.



## On-going

### Steering group

An expert support group enables a two-way flow of information to ensure both that children, young people and their families (CYPF) have full access to everything they need and for the young people's work to have meaningful impact.

### Duration

CYPF are engaged for longer periods to act within an ongoing project's governance structure. They might be tasked with identifying prominent or important issues, to prioritise issues or set agendas, and to generate potential solutions to issues or problems.



## Guiding principles for involving children, young people and families in co-production

Co-production, for Fullscope, is a way of designing and delivering support for children, young people and their families which places CYPF at the centre of the development process, recognising them as experts by their own experience. This involves a process of working together, using CYPF expertise, experience, knowledge and capabilities to ensure the best outcome for them and others.

### Underpinning values and principles:

1. All children, young people and families can express their views freely and these views will be given weight (United Nations 2009)

2. We consider children, young people and their families to be important assets, with skills and resources
3. We work to break down the barriers between people who use services and the people running those services
4. We build on people's existing capabilities
5. We include reciprocity (where people get something back for having done something for others) and mutuality (people working together to achieve their shared interests)
6. We work with peer and personal support networks alongside professional networks
7. We facilitate social change by helping organisations to become agents for change rather than being solely service providers.

At Fullscope we embody these principles by delivering *ongoing* co-production and *task-and-finish* co-production projects (see below).

It is important to note that co-production may not always be the most appropriate method of involving children, young people and families, for example, if time doesn't allow for effective engagement and relationship building, or where CYPF will have limited power or influence. Wherever possible Fullscope works to the co-production models below to involve CYPF. However, we acknowledge that there may be times where involvement looks different, for example consultation, participatory activity and feedback: we will not call this co-production.

Fullscope believes that listening to the voices of CYPF provides systems and services with opportunities for learning, and that CYPF voices should be amplified.

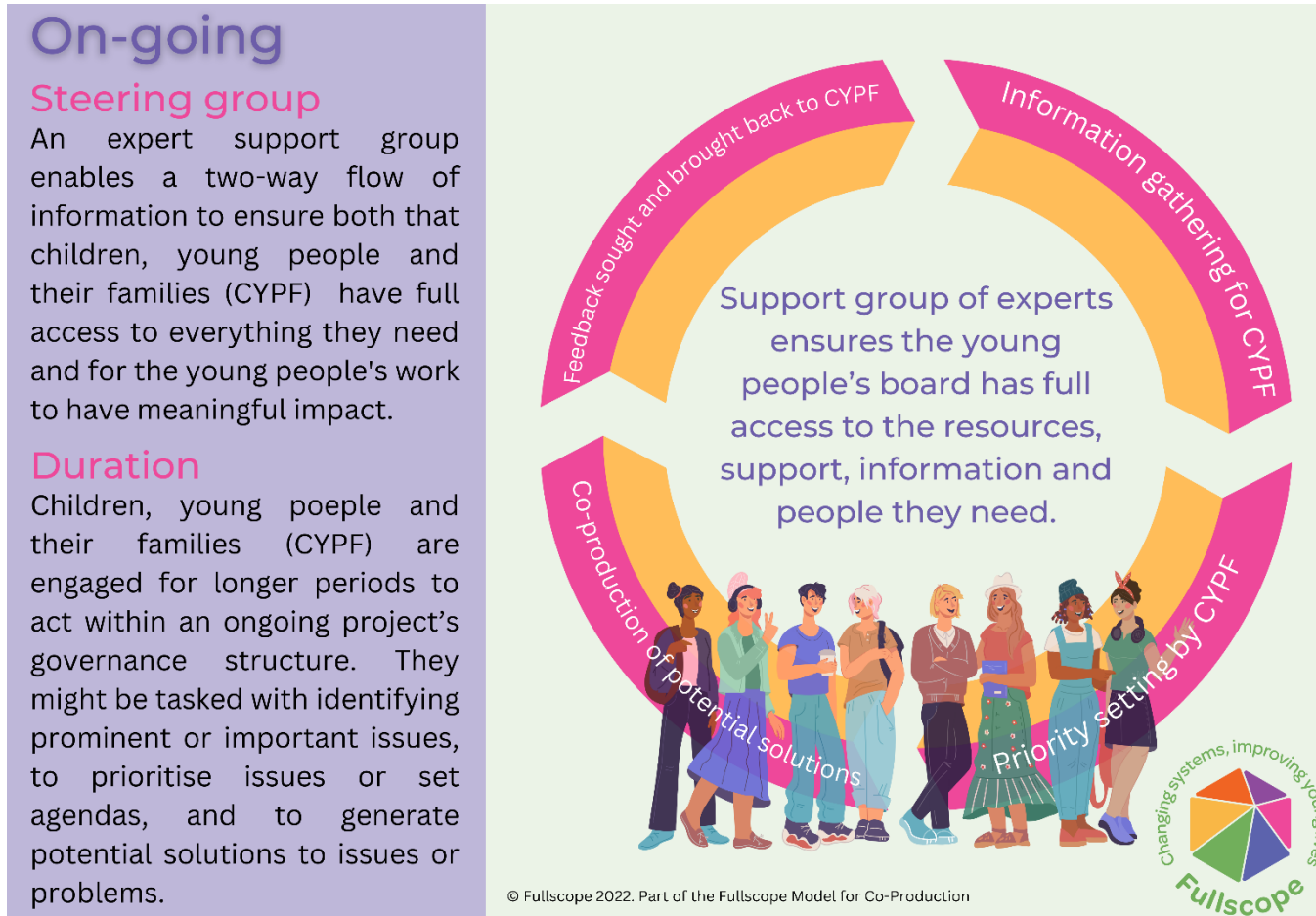
## Task and finish co-production model

The structure below presents the Fullscope approach to time limited co-production projects where the insight, experiences and skills of children, young people and their families (CYPF) are needed to help develop solutions or ideas about a particular issue:



## Ongoing co-production model

There will be some projects where children, young people and their families are engaged for longer periods to act within an ongoing project's governance structure. Their role may extend beyond co-production, but they may be asked to engage in co-production activities, e.g., to identify prominent or important issues, to prioritise issues or set agendas, and to generate potential solutions to issues or problems. The model is similar but is now delivered in a more cyclical process:



## Creativity in the co-production process

Creativity has the potential to unlock co-production possibilities, and build the relationships needed for effectively involving CYPF. Wherever possible, Fullscope works with artists, using creative resources and activities in both task and finish and on-going co-production projects.

### Companionship Compass

Artscaping is the practice of exploring and creating in nature developed by Cambridge Curiosity and Imagination (CCI) through creative collaborations between artists, professionals, schools, and families. It embodies a collective way of being core to CCI's ongoing work.

[Branching Out](#) brought together CCI, the Cambridge Acorn Project and Fullscope, with academic partners at University College London and Anglia Ruskin University in 2022, to work together to learn how Artscaping might be scaled up to benefit more children. Teaching assistants, teachers and volunteers were trained to share elements of Artscaping in six schools across Cambridgeshire and Peterborough. The Compass was developed to guide and support them. Because of a shared belief that collaboration between children, artists, professionals, and communities is essential, the training resources for Branching Out were co-created with children from Mayfield Primary School (Cambridge). A class of 9/10 year olds worked with the team over two days to share and test out ideas and reflect on the most important values the new training resources should convey.

The Companionship Compass is a navigational aid designed to help adults find their way alongside children and young people as they set out to explore ideas and be creative together. Designed by artist Susanne Jasilek, this kinetic paper edition of the Compass has been commissioned by Fullscope as their manifesto for creative co-production.

To request the full downloadable compass resource to utilise its navigational points for creative co-production, contact [getinvolved@fullscopecollaboration.org.uk](mailto:getinvolved@fullscopecollaboration.org.uk)

*If you would like to join Fullscope in exploring effective involvement and co-production with children, young people and their communities further, get in touch! [www.fullscopecollaboration.org.uk](http://www.fullscopecollaboration.org.uk)*

